



All Rights Reserved

Materials and specifications are subject to change without notice.
Featured machines in photos may include additional equipment.
See your XCMG dealer for available options.



WHEEL LOADER XC958



www.xcmg.com

XCMG Regional Departments:

Europe	(+86-516) 87739703 87739218 87739537	Africa	(+86-516) 87735009 87739222 87739283
West Asia & North Africa	(+86-516) 87739702 87739202 87739223	Central Asia	(+86-516) 87739236 87739239 87739538
Asia-Pacific	(+86-516) 87739128 87739500 87739529	America	(+86-516) 87739285 87739551 87739710

XUZHOU CONSTRUCTION MACHINERY GROUP IMP. & EXP. CO., LTD
Add: No.1, Tuolanshan Road, Xuzhou Economic Developing Zone, Jiangsu, China 221004

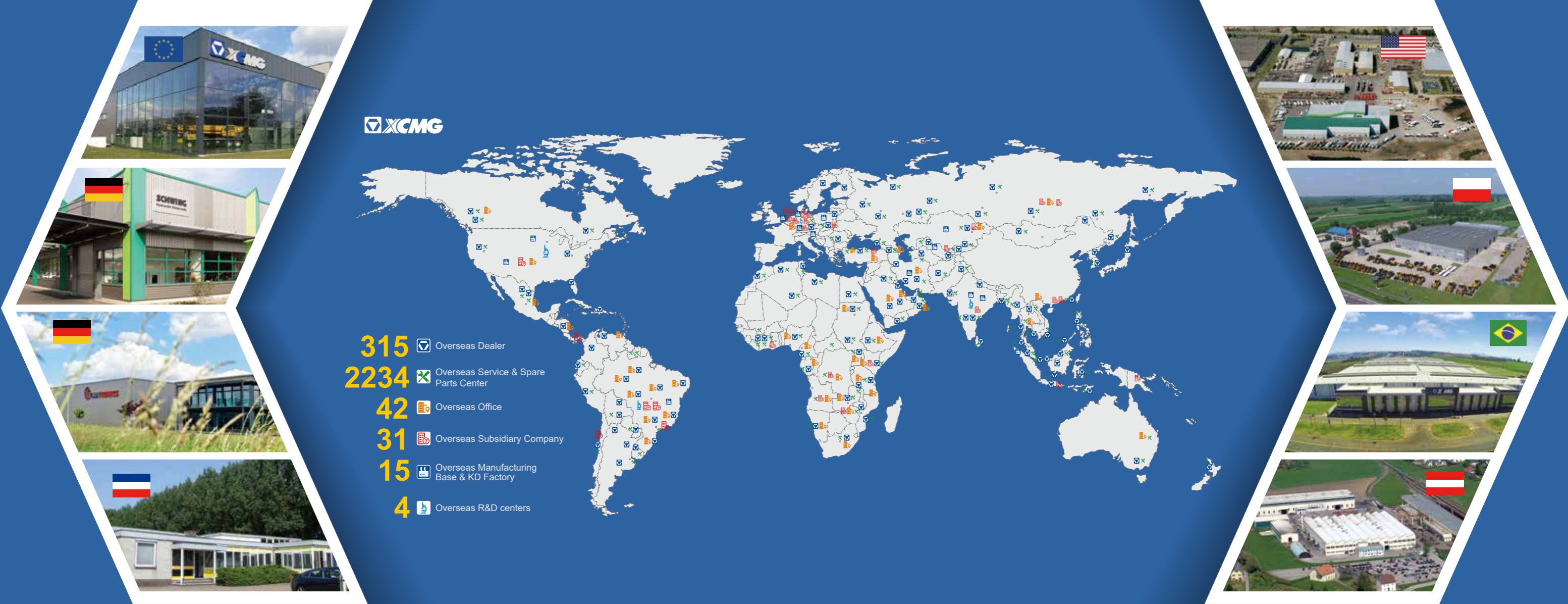
Fax: +86 (0) 516 8773 9228
E-mail: export@xcmg.com

XCMG MINING EQUIPMENT AUSTRALIA PTY LTD
Add: Level 10,185 Victoria Square Adelaide 5000 Australia.
Phone: +61 0411 591 394

E-mail: royrossini@xcmg.com
xcmgaustralia@xcmg.com

EURO III EMISSION





INTRODUCTION OF XCMG

Founded in 1943, XCMG is a multinational corporation with the most comprehensive range of competitive, influential products in the construction machinery industry. Our business covers eight key areas: construction machinery, heavy trucks, mining machinery, sanitation machinery, machinery components, construction, finance, and the ICT industry.

XCMG has established a global R&D network with a total of six centers in China, the US, Germany, Brazil and India, with China national technology center at its core. In addition to a number of manufacturing bases in China, the US, Germany, the Netherlands, Poland, Austria, Brazil, India, and Uzbekistan, we possess two complete machine brands (XCMG, Schwing), and several component brands including FT, AMCA. It is the strength of this global R&D network and manufacturing operations that has made XCMG the industry leading global construction equipment manufacturer that it is today.

For more than 30 years, XCMG has been sowing the seeds of overseas development as the No. 1 exporter in China's construction machinery industry. Today, we have 42 branches and offices, 315 distributors, 526 contractors in 188 countries and regions worldwide and are still growing rapidly.



SCIENTIFIC AND RELIABLE



OVERVIEW

XC958 is equipped with Euro III emission engine, ZF 4BP210 automatic transmission, XCMG wet drive axle, variable hydraulic system sensing hydraulic system.

The whole machine has significant advantages in terms of reliability, energy saving, high efficiency and comfort, and has reached the international advanced level.

Low noise, high torque engine and large capacity torque converter ensure maximum efficiency at low speed; equipped with international leading automatic electronically controlled gearbox, intelligent variable speed automatic transmission technology based on optimal transmission efficiency principle reasonable shifting strategy, combined with KD file And the FNR switch function of the joystick simplifies operation and improves efficiency. The fully hydraulic wet brake bridge (maintenance-free) has high load carrying capacity and is better suited to a variety of harsh operating conditions.

With large open heavy-duty structural parts, finite element analysis technology is used to reduce stress concentration; powerful processing and manufacturing capabilities, and structural parts are robot welded to ensure welding quality.

The intelligent heat management system's large radiator + low-speed fan can automatically adjust the speed according to the heat dissipation requirements, so that the whole machine can quickly reach and maintain the best working condition, reduce energy consumption and reduce noise pollution. The fan has an automatic reversal function for self-cleaning in high dust environments.

Variable hydraulic system provides on-demand distribution of fuel supply during steering and work unit operation. At the same time, command-based control makes the operator's work easier and more fun.

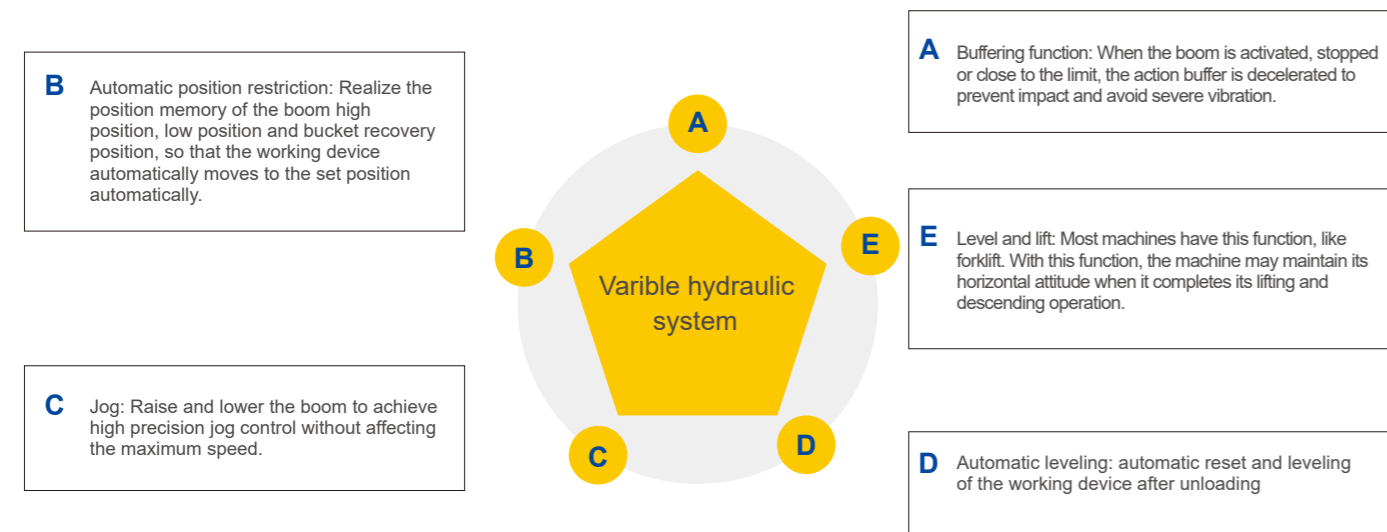


PERFORMANCE AND FEATURES

Intelligent

The intelligent heat management system's large radiator + low-speed fan can automatically adjust the speed according to the heat dissipation requirements, so that the whole machine can quickly reach and maintain the best working condition, reduce energy consumption and reduce noise pollution. The fan has an automatic reversal function for self-cleaning in high dust environments.

Variable hydraulic system provides on-demand distribution of fuel supply during steering and work unit operation. At the same time, command-based control makes the operator's work easier and more fun.



HIGH SAFETY PERFORMANCE

Complying with standards of ISO 5006 operator vision field.

Complying with standards of ISO 3449, ISO 3471, ISO 3164 ROPS/FOPS cabs.

Complying with standard of ISO 2867, ISO 2860 ladders, passageway, operation platform and exit/ excess.

Flame retardant material applied in cab interiors, extinguisher equipped.

Complying with standards of ISO 10533, ISO 10570 lifting arm bracket and hinged lock devices.



COMFORTABLE

Spacious and ergonomic cab with excellent visibility.

FOPS/ROPS cab with heat and air conditioning provides good air flow through multiple vents.

The cab is well seated and insulated to provide a dust proof environment.

All switches are conveniently placed.

Digital gauges monitor the machine vital functions.

Suspension seat with lumbar support reduce operator fatigue.

Integrated F-N-R electronic lever of shifting function for precise control, easy operation and high working efficiency



EASY MAINTENANCE

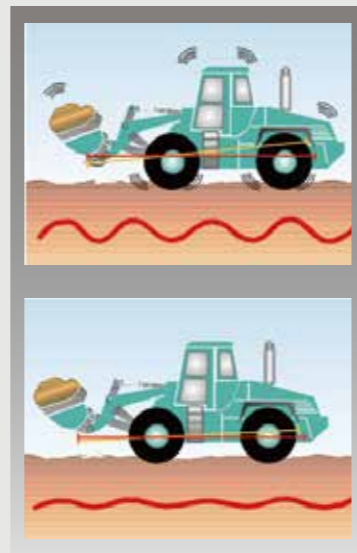
Convenience

The new digital combination meter, the vehicle running status and various types of information at a glance; Side-turn cab and large-angle integral rear steering hood for complete display of all key components for easy maintenance and service; Single row of large tone radiators, upturned back cover A large maintenance window on the side of the frame provides users with first-class equipment maintainability Ladders are placed at appropriate locations on the front and rear frames and counterweights for ease of operation Reasonable extraction of oil drain and oil drain devices, reasonable pressure measurement points for routine maintenance and testing



ENERGY SAVING

Load sense hydraulic system featuring automatic adjusting operation condition, improving fuel efficiency. Intelligent independent cooling system, fan rotation on request for energy and noise reduction. Separated cooling layout with improved cooling efficiency and fuel efficiency. Full automatic torque converter, two working mode, enabling the operator match the optimum efficiency according to working requirement. Pilot control lever integrating F-N-R shifting function minimizing operation motions with higher working efficiency. Improved traveling performance and load retention.

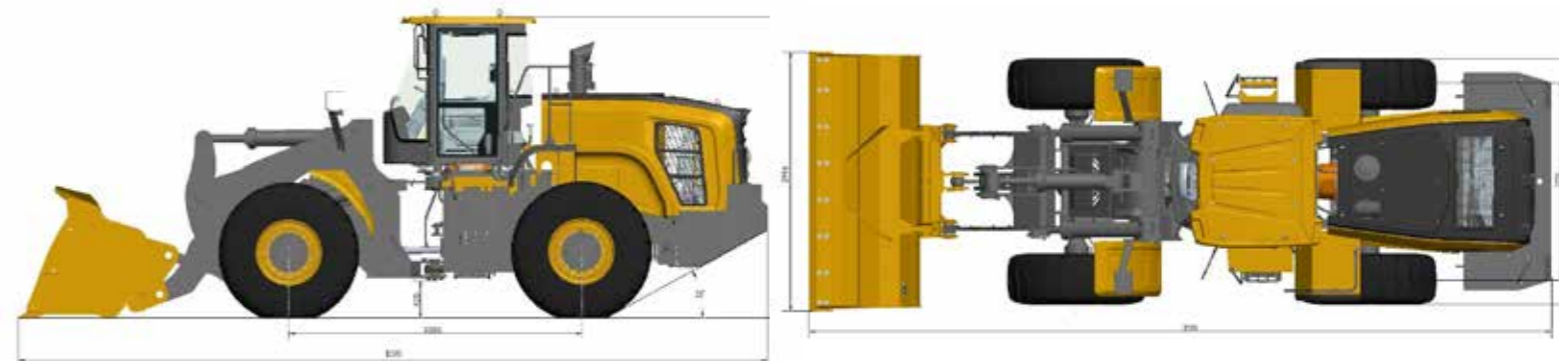


TECHNICAL SPECIFICATIONS

滚滚长江东逝水

Item		Parameter(standard boom)	Parameter (Quik change)
Rated bucket	m ³	3.1	3.5
Rated load	kg	5500	5000
Overall weight	kg	18700±300	19200±300
Dumping height	mm	3050	2860
Dumping distance	mm	1140	1320
Wheelbase	mm	3350	3350
Tread	mm	2250	2250
Length	mm	8335	8465
Height	mm	3435	3435
Bucket width	mm	3000	2996
Maximum breakout force	kN	170±5	150±5
Maximum traction	kN	160±5	160±5
Turning radius (tyre center)	mm	5990	5990
Pass radius	mm	6990	7050
Boom lifting time	s	≤5.5	≤5.5
Total hydraulic cycle time	s	≤10	≤10
Tipping load	Straight state	kg	12600
	Maximum steering	kg	11500
	Model	QSB6.7	QSB6.7
Engine	Rated power	kw	164
	Rated speed	r/min	2200
Tire specifications		23.5R25★★	23.5R25★★
Travel speed km/h	F1/R1	6.5/6.5	6.5/6.5
	F2/R2	11/11	11/11
	F3/R3	24/24	24/24
	F4	38	38

OUTLINE DIMENSIONS



Optimum Services , XCMG Guaranteed



XCMG approved attachments



Genuine parts



Financial solutions



Maintenance contract



Telematics

Professional Integrated Complete Solutions

XCMG group has built a strong reputation based on the quality, reliability and durability of its construction machinery. What's more, XCMG has gradually established a service network to constantly provide its local integrated and highly efficient complete solutions for all customers.

Full Range of Services Ready for you

In order to respond to your needs as fast as possible, XCMG experts are on their way to your job site from one of our facilities near you. Full range of services are available in order to reduce your total cost of ownership and increase your revenue.



XCMG Global Spare parts System



XC938

XC948

XC958