

# Rotating telehandlers

Roto 50.26



**PERFORMANCE AND FEATURES****ROTO50.26SPLUSEE****Performance**

Unladen weight (kg)	17300
Maximum load capacity (kg)	4950
Lift height (m)	25.9
Maximum reach (m)	22.9
Lift height at max. load capacity (m)	9.7
Reach at max. load capacity (m)	7
Load capacity at max. lift height (m)	1500
Load capacity at max. reach (kg)	150
Boom side-shift (mm)	-
Frame levelling (%)	+/-12, +/-4
Boom section	5

**Powertrain**

Engine	FPT NEF45
Range/Cylinders	4500/4
Engine power (kW/HP)	125/170
Anti-pollution technology	Stage V - DOC + DPF + SCR
Reversible Fan	-
Maximum speed (km/h)	40
Fuel tank capacity (l)	150
AdBlue tank capacity (l)	43
Hydrostatic transmission	YES - 2V
EPD	STD
Joystick autoaccelerante	STD
Axles	Drop portal
Reducers	RR 700
Brakes	Dry discs

**Hydraulic**

Hydraulic pump	2 - LS + FS
Delivery / pressure (L / MIN - BAR)	138+100 - 250/230
Hydraulic oil tank capacity (l)	120
Auxiliary hydraulic service on boom	●
Rear service line	-

**Cab**

Cab finishing	PREMIUM
ASCS	Full
FOPS II Cab	●
ROPS Cab	●
Controls	Electronic joystick control
Tilting cab	●
Reverse shuttle	Dual reverse

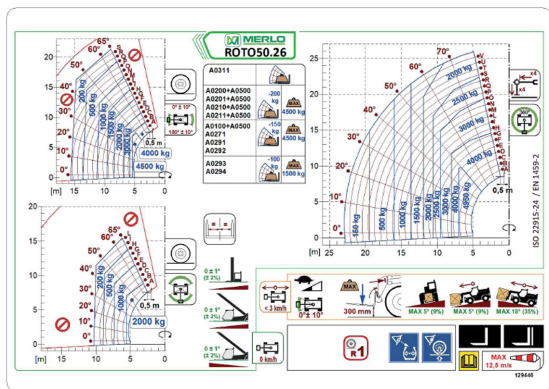
**Configuration**

Hydropneumatic Suspension CS Merlo	-
Hydropneumatic Suspension BSS Merlo	-
Hydropneumatic Suspension EAS Merlo	●
Work lights on cab	○
Sun-shade in the cab	●
Tac-lock	●
Pre-arrangement for aerial work platform	●
Two floating forks	●
Pedal Inching-Control	-
Permanent four-wheel drive	●
All wheel steering	●
Three steering way	●
Standard tyres	
OPT tyres	
Hydraulically controlled stabilizers	
Turret rotation	
Tractor type approval	
Pneumatic brakes (ton)	
Hydraulic brakes (ton)	
PTO	
3-point rear linkage	

- not available
- standard
- optional



ZSE - E



M2

Dimensions



	ROTO50.26SPLUSEE		
A - Length	7150		
C - Wheelbase	3070		
F - Ground clearance	370		
H - Width	2430		
M - Cabin width	1010		
P - Height	3120		
R - Turning radius at wheels	3850		
S - Turning radius at forks	6310		

**Your Merlo dealer**

**MERLO S.P.A.**

Via Nazionale, 9

12010 S. Defendente di Cervasca, (Cuneo) Italia

Tel. +39 0171 614111

Fax +39 0171 684101

[info@merlo.com](mailto:info@merlo.com)

[www.merlo.com](http://www.merlo.com)



